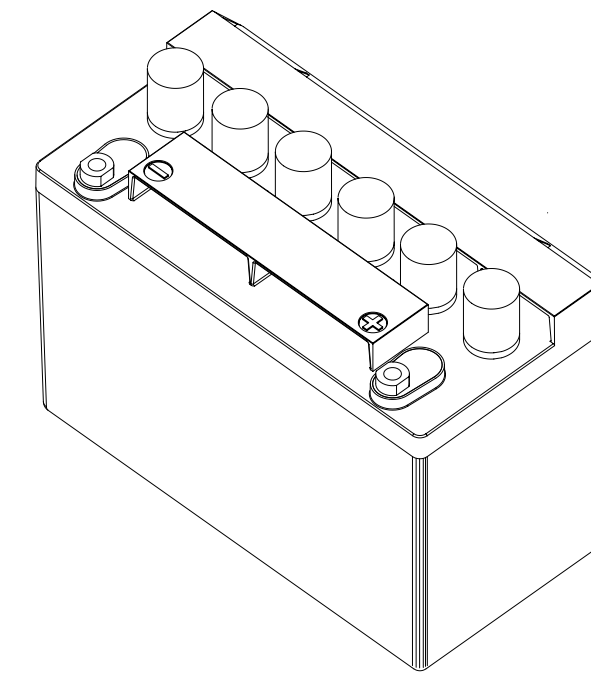


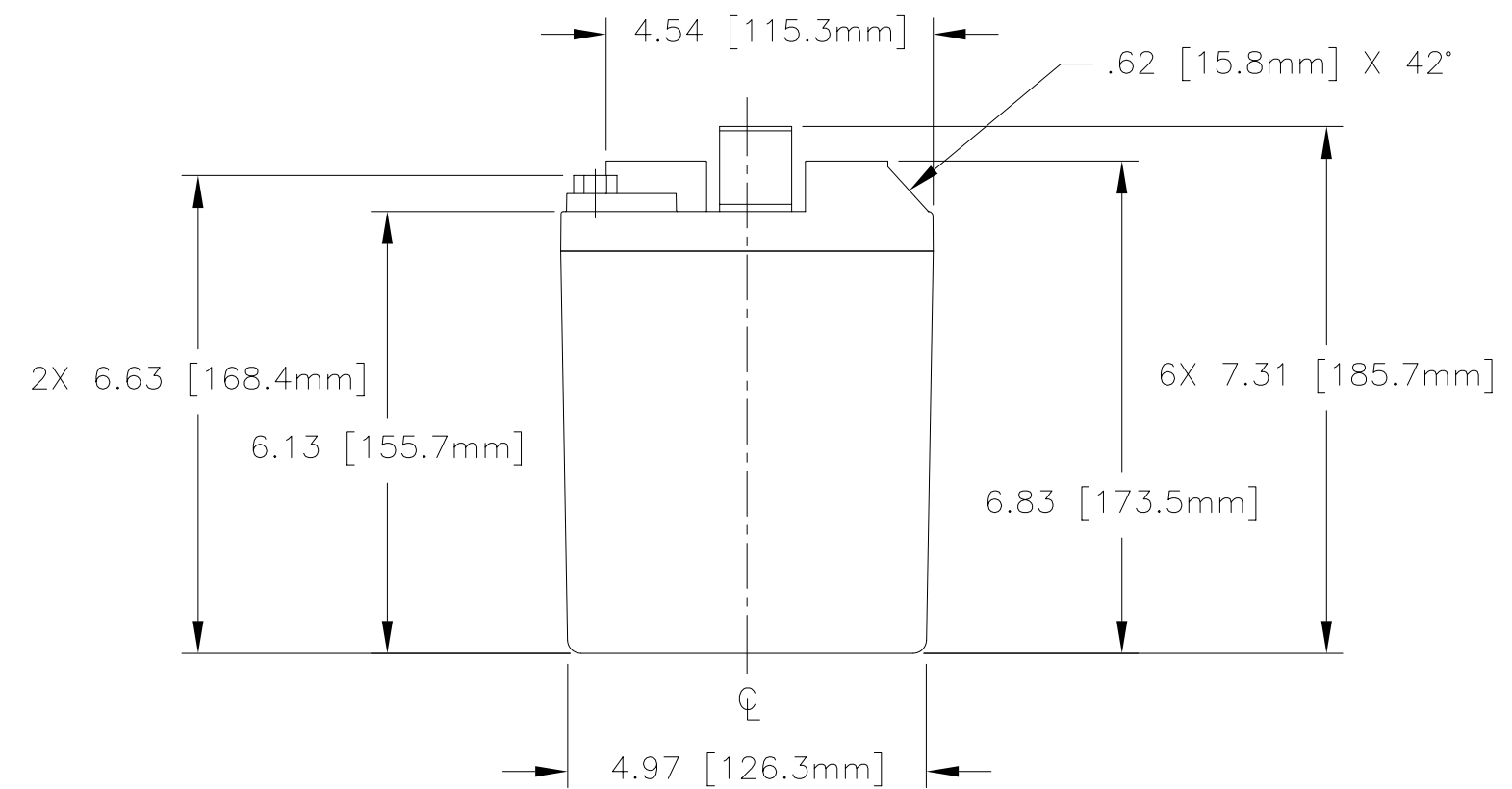
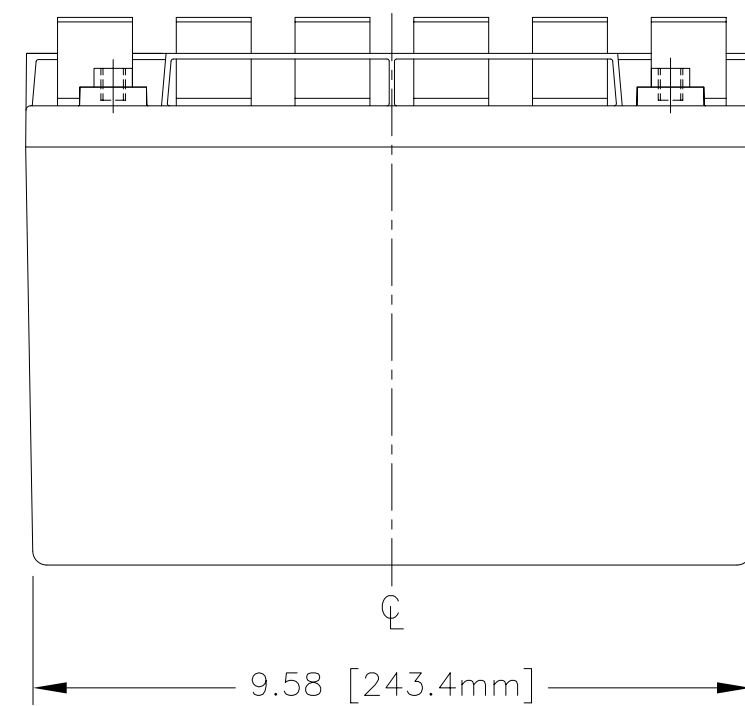
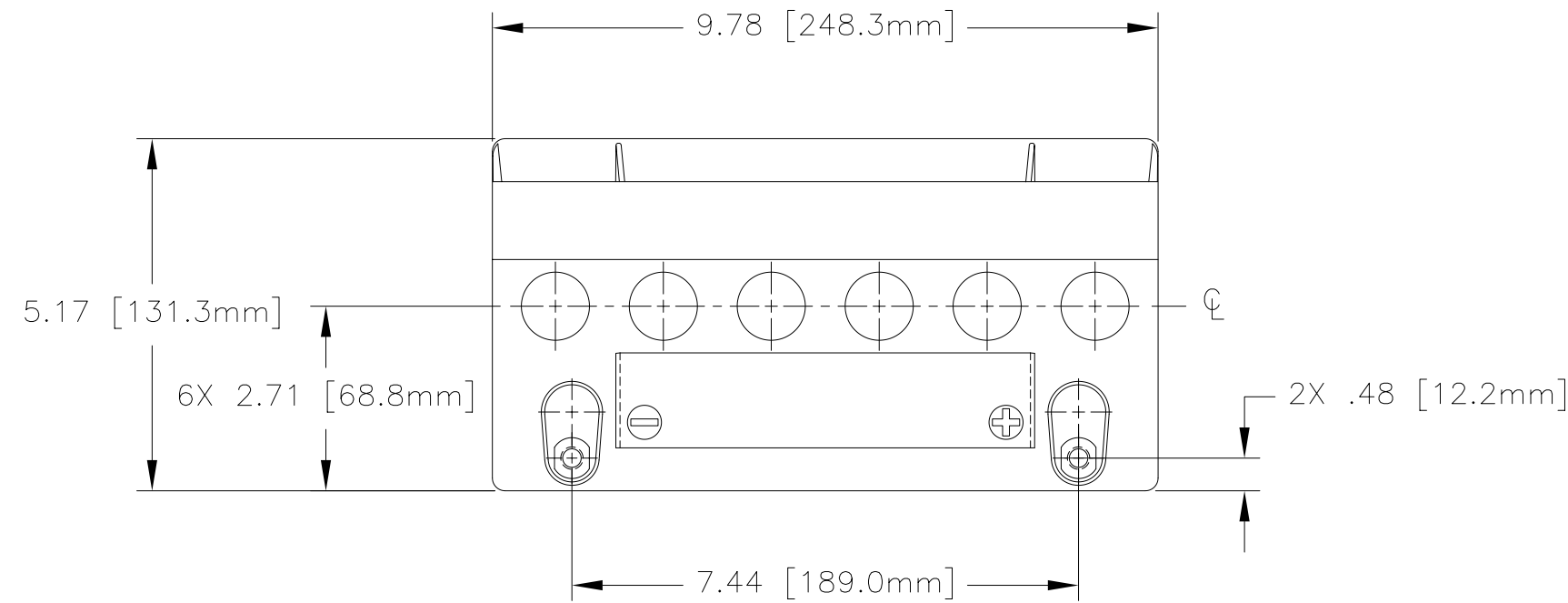
NOTES: UNLESS OTHERWISE SPECIFIED

- BATTERY CONFORMS TO THE DESIGN REQUIREMENTS OF 14 CFR PART 25.1353(c).
- INSPECT PER FAR 21.303(h) QUALITY SYSTEM.
- SEE DRAWING NUMBER CB-00243 AND PROCEDURE P-1000 FOR ASSEMBLY AND TEST INSTRUCTION. PROCEDURE AND ASSEMBLY DRAWINGS ARE FOR INTERNAL USE ONLY
- TERMINAL HARDWARE KIT (CBC PN 9586) CONTAINS M8 HEX HEAD SCREWS, CONICAL WASHERS, AND INSTRUCTION TAG.
- BATTERIES ARE RATED IAW INTERNATIONAL ELECTROTECHNICAL COMMISSION STANDARD 952-1 UNLESS OTHERWISE SPECIFIED.

REVISIONS			
REV	DESCRIPTION	DATE	APPROVED
A	ADDED 42° CHAMFER TO COVER	1/8/99	JBT
B	REVISED NOTES & RATE TABLE	1/15/02	JBT



REFERENCE VIEW



CAPACITY RATINGS	
PART NUMBER	CB-35A
MAXIMUM WEIGHT	28.5 LBS [13.0 KG]
RATED CAPACITY, C <sub>1</sub>	29 AH
POWER RATING AT 23°C (74°F)	lpr 725 A, lpp 823 A
POWER RATING AT -18°C (0°F)	lpr 496 A, lpp 600 A
POWER RATING AT -30°C (-22°F)	lpr 365 A, lpp 441 A

ENVELOPE DRAWING

QTY REQD	CAGE CODE	PART OR IDENTIFYING NO.	NOMENCLATURE OR DESCRIPTION	MATERIAL SPECIFICATION	ITEM NO.
PARTS LIST					
UNLESS OTHERWISE SPECIFIED DIMENSIONS ARE IN INCHES TOLERANCES ARE: FRACTIONS DECIMALS ANGLES ± 1/32 .XX ± .06 ± 1° .XXX ± .060		CONTRACT NO.		CONCORDE BATTERY CORPORATION 2009 SAN BERNARDINO RD, W. COVINA, CA 91790	
TREATMENT NONE		CHECKED AMIII	DATE 7/8/98	TITLE BATTERY, LEAD ACID, 12 VOLT	
FINISH NONE		APPROVED JBT	DATE 7/8/98	SIZE C	REV B
SIMILAR TO		ACT WT	ISSUED AT	CAGE CODE 63017	DWG NO. CB-35A
		CALC WT	DATE 1/16/02	SCALE 1=2.5	SHEET 1 OF 1

ENGINEERING COPY 16JAN02