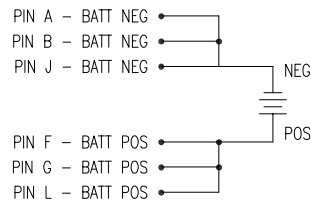
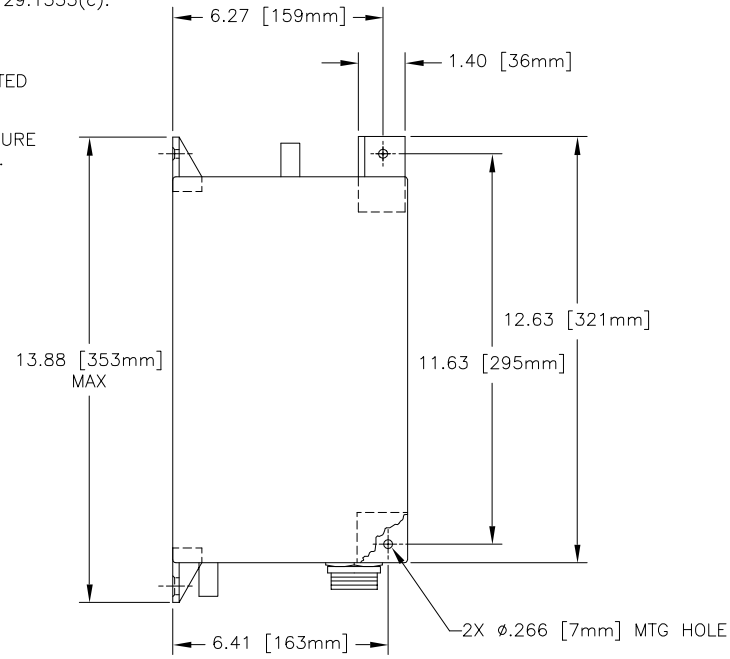


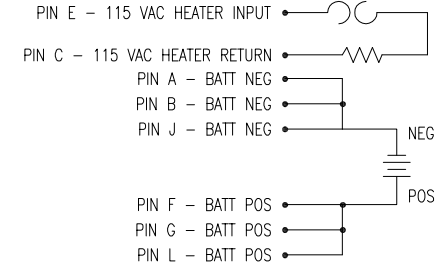
NOTES: UNLESS OTHERWISE SPECIFIED

- BATTERY CONFORMS TO THE DESIGN REQUIREMENTS OF 14 CFR PARTS 23.1353, 25.1353(c), 27.1353, 29.1353(c).
- INSPECT PER FAR 21.303(h) QUALITY SYSTEM.
- ABBREVIATION USED IN TITLE IS: VALVE REGULATED SEALED LEAD ACID (VRSLA).
- SEE DRAWING NUMBER CB-00216 AND PROCEDURE P-1000 FOR ASSEMBLY AND TEST INSTRUCTION. PROCEDURES AND ASSEMBLY DRAWINGS ARE FOR INTERNAL USE ONLY.
- BATTERIES ARE RATED IAW INTERNAL ELECTRO-TECHNICAL COMMISSION STANDARD 90952-1, UNLESS OTHERWISE NOTED.

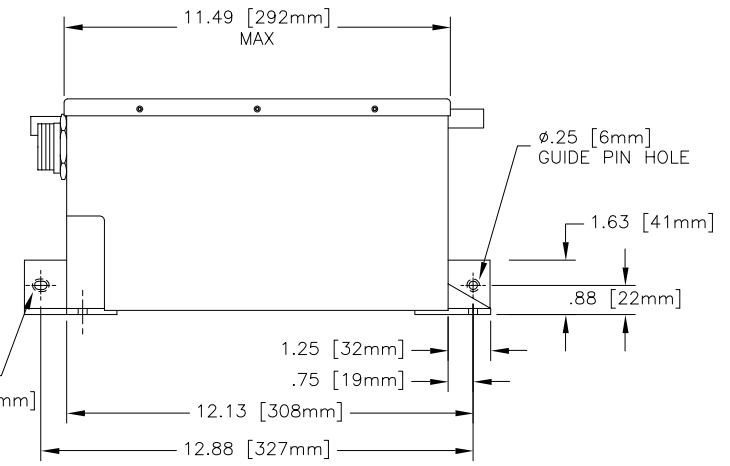
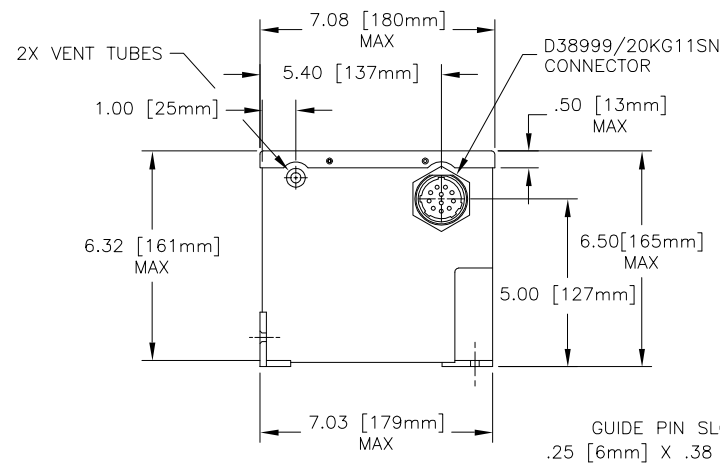
| REVISIONS | | | |
|-----------|-------------------------------|----------|----------|
| REV | DESCRIPTION | DATE | APPROVED |
| A | ADDED VERSION WITHOUT HEATERS | 11/6/03 | JBT |
| B | RENUM RG-124-2 TO RG-124 | 10/07/04 | JBT |



CONNECTOR SCHEMATIC DIAGRAM
(RG-124-1 ONLY)



CONNECTOR SCHEMATIC DIAGRAM
(RG-124 ONLY)



ENVELOPE DRAWING

| PART NUMBER | RG-124 | RG-124-1 |
|--------------------------------|----------------------|----------------------|
| MAXIMUM WEIGHT | 41.2 LBS [18.7 KG] | 41.2 LBS [18.7 KG] |
| RATED CAPACITY, C ₁ | 17 AH | 17 AH |
| POWER RATING AT 23°C | lpr TBD A, lpp TBD A | lpr TBD A, lpp TBD A |
| POWER RATING AT -18°C | lpr TBD A, lpp TBD A | lpr TBD A, lpp TBD A |
| POWER RATING AT -30°C | lpr TBD A, lpp TBD A | lpr TBD A, lpp TBD A |
| INTERNAL AC HEATERS | 3A MAX AT 115V | NONE |

TBD = TO BE DETERMINED

| QTY | RECD | CAGE CODE | PART OR IDENTIFYING NO. | NOMENCLATURE OR DESCRIPTION | MATERIAL SPECIFICATION | ITEM NO. |
|--|------|-----------|-------------------------|---|------------------------|-----------------|
| PARTS LIST | | | | | | |
| UNLESS OTHERWISE SPECIFIED DIMENSIONS ARE IN INCHES. TOLERANCES ARE: | | | | CONCORDE BATTERY CORPORATION 2009 SAN BERNARDINO RD, W. COVINA, CA 91790 | | |
| FRACTIONS DECIMALS ANGLES | | | | TITLE BATTERY, VRSLA, 24 VOLT, RG-124 SERIES | | |
| ± 1/32 .XX ± .06 ± 1° | | | | DRAWN S. VALDEZ 4/2/01 | | |
| .XXX ± .030 | | | | CHECKED AMIII 4/23/01 | | |
| TREATMENT NONE | | | | APPROVED JBT 5/17/01 | | |
| FINISH NONE | | | | ISSUED DC 11/16/04 | | |
| SIMILAR TO | | ACT WT | CALC WT | SCALE 1=3 | SIZE C | CAGE CODE 63017 |
| | | | | | DWG NO. RG-124 | REV B |
| | | | | | | SHEET 1 OF 1 |