

NOTES: UNLESS OTHERWISE SPECIFIED

1. MANUFACTURED AND INSPECTED IAW AS9100 QUALITY SYSTEM REQUIREMENTS.

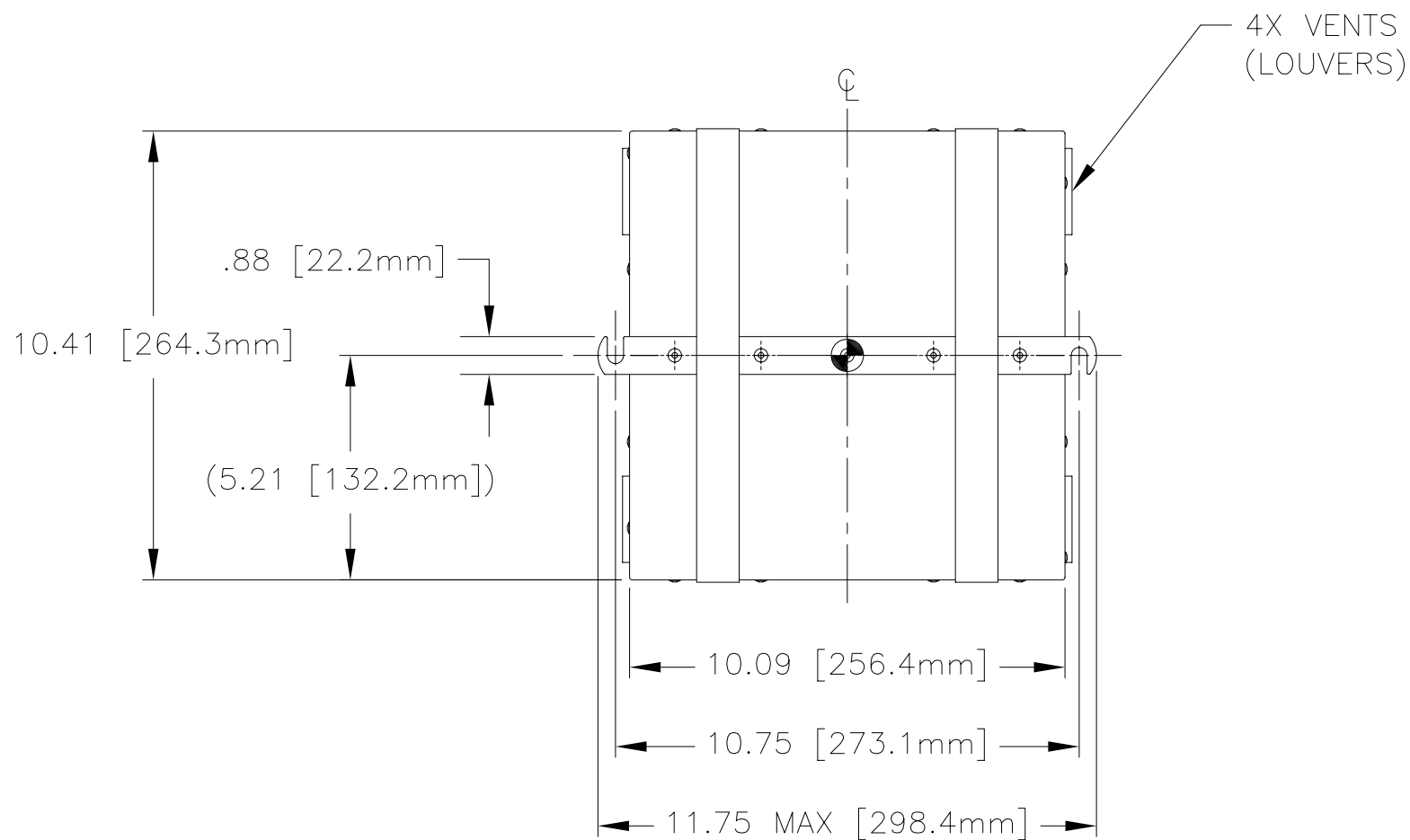
2. ABBREVIATION USED IN TITLE IS: VALVE REGULATED SEALED LEAD ACID (VRSLA).

3. "K" SUFFIX DENOTES A "FIRE RESISTANT" EXTERNAL CONTAINER CONSTRUCTED OF 5052 ALUMINUM ALLOY. "KS" SUFFIX DENOTES A "FIRE PROOF" EXTERNAL CONTAINER CONSTRUCTED OF STAINLESS STEEL.
4. SEE DRAWING NUMBER CB-00218 AND PROCEDURE P-1000 FOR ASSEMBLY AND TEST INSTRUCTIONS. PROCEDURES AND ASSEMBLY DRAWINGS ARE FOR INTERNAL USE ONLY.

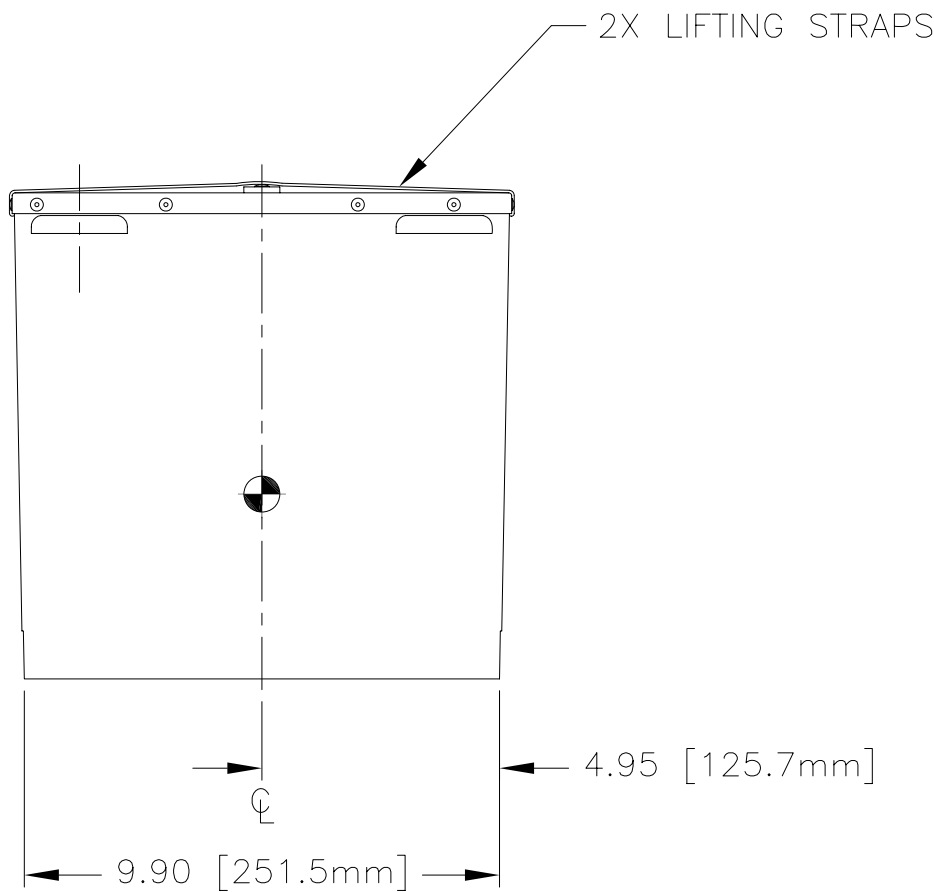
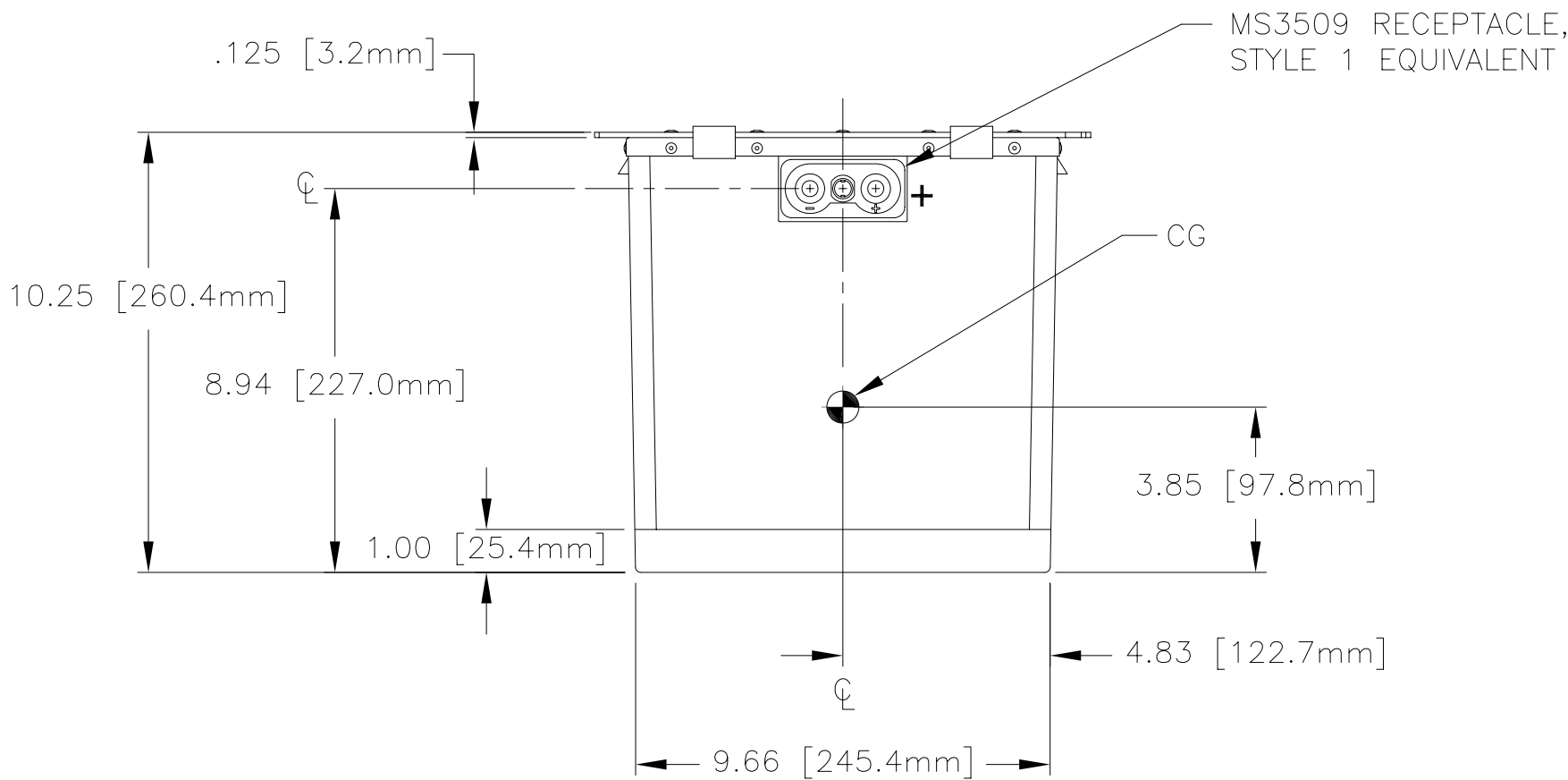
5. BATTERIES ARE RATED IAW INTERNATIONAL ELECTROTECHNICAL COMMISSION STANDARD 60952-1 AND RTCA STANDARD DO-293, UNLESS OTHERWISE NOTED.

6. DIMENSIONS ARE INCH [MILLIMETER].

REVISIONS			
REV	DESCRIPTION	DATE	APPROVED
A	ADDED POWER RATINGS, UPDATED NOTES	8/15/12	JBT



PART NUMBER	RG-380E/46K	RG-380E/46KS
MAXIMUM WEIGHT	89 LBS [40.4 KG]	91 LBS [41.3 KG]
RATED CAPACITY, C ₁	46 AH	
POWER RATING AT 23°C	I _{pp} 1375 A, I _{pr} 1050 A	
POWER RATING AT -18°C	I _{pp} 1075 A, I _{pr} 850 A	
POWER RATING AT -30°C	I _{pp} 875 A, I _{pr} 675 A	



ENVELOPE DRAWING

QTY REQD	CAGE CODE	PART OR IDENTIFYING NO.	NOMENCLATURE OR DESCRIPTION	MATERIAL SPECIFICATION	ITEM NO.
PARTS LIST					
UNLESS OTHERWISE SPECIFIED DIMENSIONS ARE IN INCHES TOLERANCES ARE: FRACTIONS DECIMALS ANGLES ± 1/32 .XX ± .06 ± 1° .XXX ± .030			CONTRACT NO.	CONCORDE BATTERY CORPORATION 2009 SAN BERNARDINO RD, W. COVINA, CA 91790	
TREATMENT NONE			APPROVALS	DATE	TITLE
FINISH NONE			DRAWN A. MISTRETTA	5/14/08	BATTERY, VRSLA, 24 VOLT, RG-380E/46K(S) SERIES
SIMILAR TO			CHECKED AMIII	5/14/08	SIZE C
ACT WT			APPROVED JBT	5/14/08	CAGE CODE 63017
CALC WT			ISSUED BT	8/15/12	DWG NO. RG-380E/46K
SCALE NONE				REV A	SHEET 1 OF 1